

OKEFENOKE RURAL ELECTRIC MEMBERSHIP CORPORATION
MINIMUM REQUIREMENTS FOR UNDERGROUND ELECTRIC
SERVICE.

ALL SERVICE EQUIPMENT SHALL BE FURNISHED, INSTALLED, AND
MAINTAINED BY CUSTOMER/ELECTRICIAN PER THE REQUIREMENTS SET BY
NATIONAL ELECTRIC CODE (NEC) AND/OR LOCAL CODES.

METER BASE - SHALL BE COMPATIBLE FOR USE WITH UNDERGROUND
SERVICE AND ACCEPT 3" CONDUIT FOR SOURCE/INCOMING SERVICE
CONDUCTORS. ALL -IN-ONE COMBINATION SERVICE EQUIPMENT MEETING
CODE SPECIFICATIONS ARE ACCEPTABLE. METER BASE SHALL BE
EFFECTIVELY GROUNDED.

GROUNDS- #4 SOLID COPPER CONDUCTOR AND TWO (2) 8' GROUNDING
RODS, SIX (6) FEET APART. (CHECK LOCAL CODES).

CONDUITS- ONLY GRAY, ELECTRICAL, PVC, SCHEDULE 40 OR GREATER.
(CHECK LOCAL CODES).

<CONDUITS FOR SUPPLY CONDUCTORS, SOURCE TO METER, WILL BE 3",
UNLESS OTHERWISE SPECIFIED BY DREMC, WITH NO REDUCING COUPLINGS,
OFFSETS OR MORE THAN TWO (2) 90 DEGREE SWEEPS>.

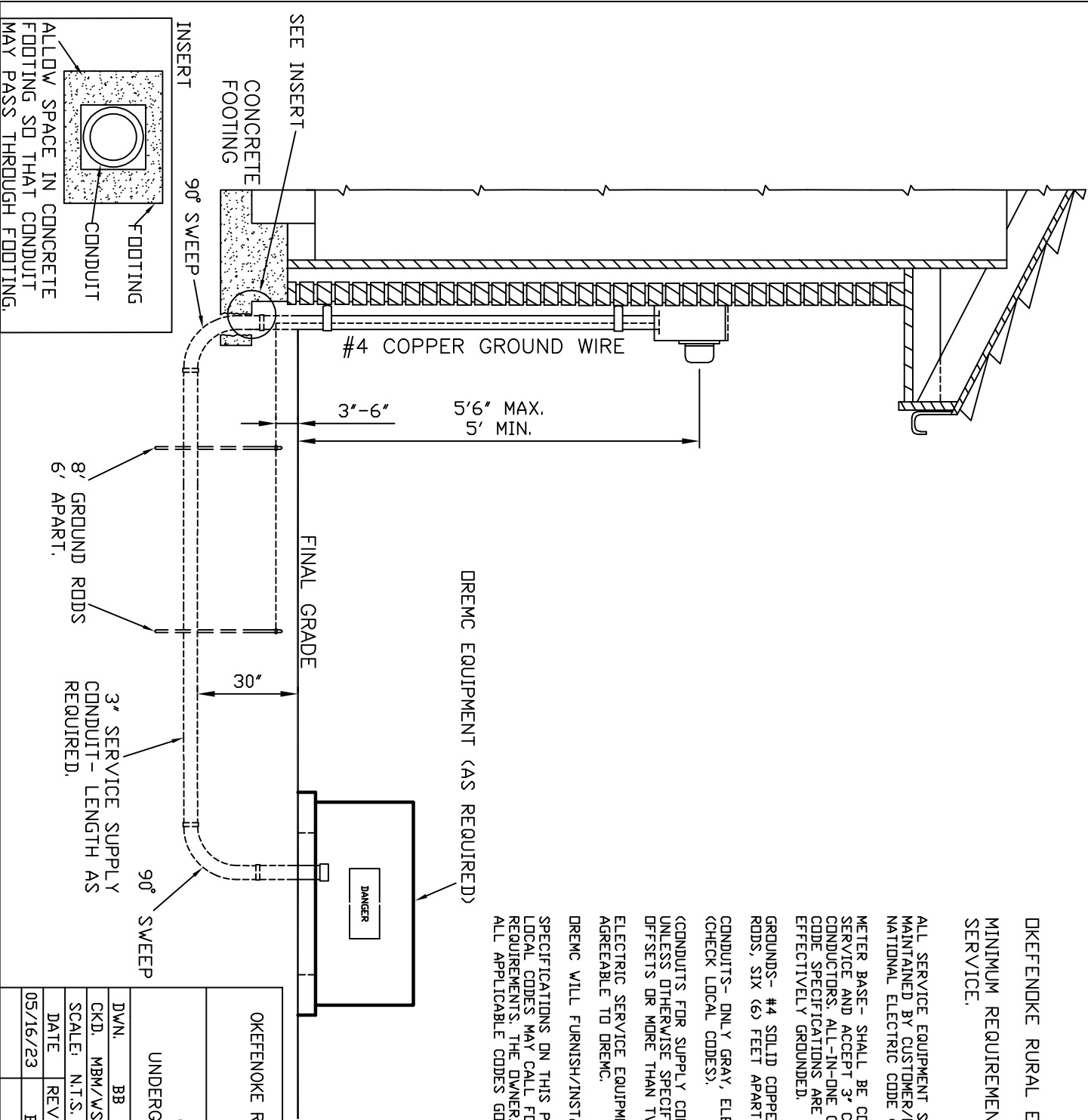
ELECTRIC SERVICE EQUIPMENT SHALL BE PLACED IN A LOCATION
AGREEABLE TO DREMC.

DREMC WILL FURNISH/INSTALL SERVICE SUPPLY CONDUCTORS AND METER.

SPECIFICATIONS ON THIS PAGE REPRESENT DREMC MINIMUM STANDARDS.
LOCAL CODES MAY CALL FOR ADDITIONAL OR MORE STRINGENT
REQUIREMENTS. THE OWNER/ELECTRICIAN MUST ENSURE COMPLIANCE WITH
ALL APPLICABLE CODES GOVERNING ELECTRICAL SERVICE.

TABLE A

ELBOW DESCRIPTION	RADIUS
1' - 90°	18"
2' - 90°	36"
3' - 90°	36"
4' - 90°	36"
6' - 90°	48"



OKEFENOKE RURAL ELECTRIC MEMBERSHIP CORPORATION
NAHUNTA, GEORGIA

CONSTRUCTION STANDARDS
UNDERGROUND METER BASE INSTALLATION

DWN.	BB	DATE: 05/16/2023	DWG. NO.	
CKD.	MBM/WSD	APPD. WSD	B-23	
SCALE: N.T.S. 584-6233				
DATE	REVISION	DATE		REVISION
05/16/23	BB			© 04/05