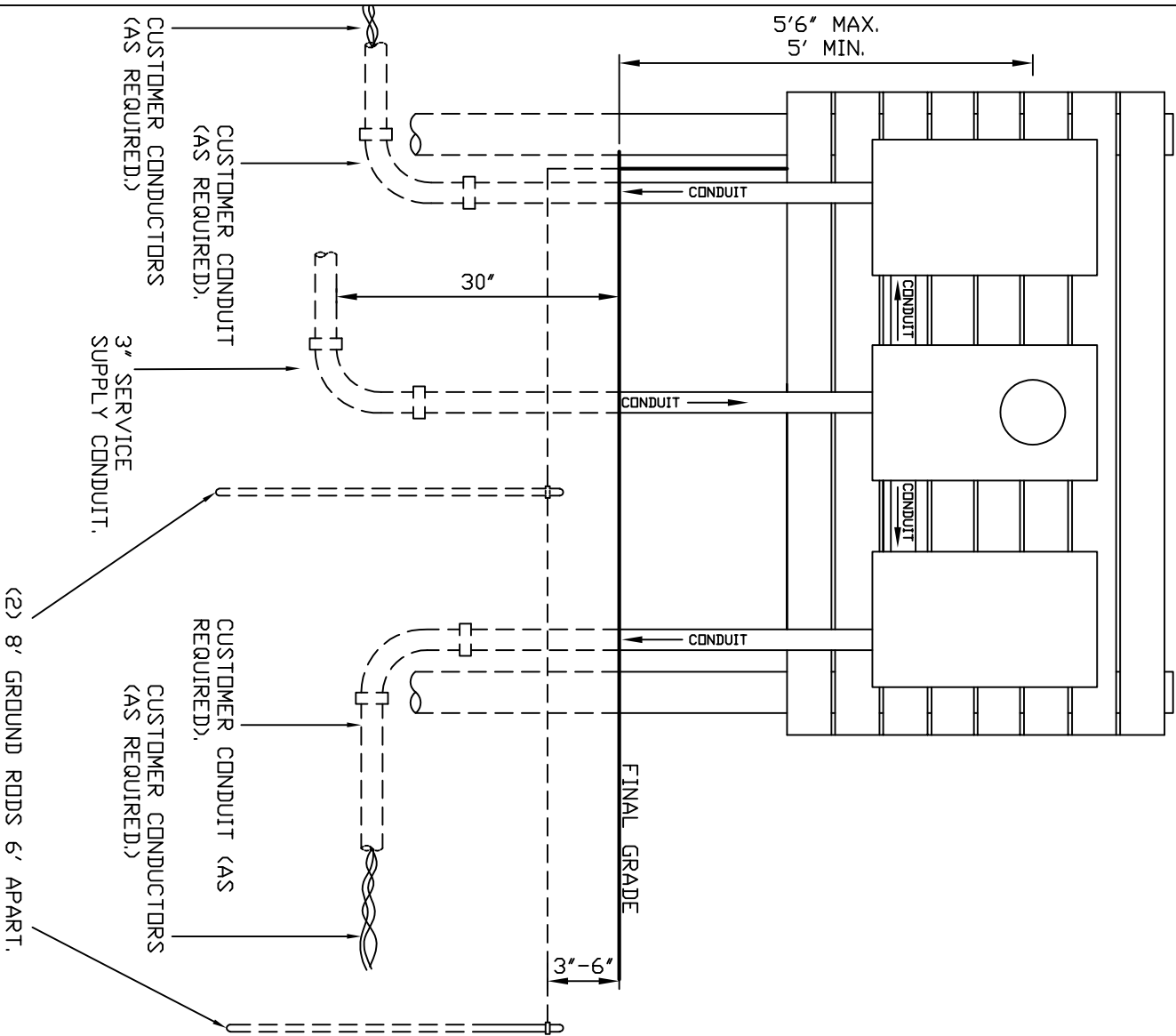


SERVICE ENTRANCE EQUIPMENT FURNISHED AND INSTALLED
BY CUSTOMER/ELECTRICIAN PER NEC AND/OR LOCAL CODES.



DKEFENOKE RURAL ELECTRIC MEMBERSHIP CORPORATION
MINIMUM REQUIREMENTS FOR UNDERGROUND ELECTRIC
SERVICE.

ALL SERVICE EQUIPMENT SHALL BE FURNISHED, INSTALLED, AND
MAINTAINED BY CUSTOMER/ELECTRICIAN PER THE REQUIREMENTS SET BY
NATIONAL ELECTRIC CODE (NEC) AND/OR LOCAL CODES.

METER BASE- SHALL BE COMPATIBLE FOR USE WITH UNDERGROUND
SERVICE AND ACCEPT 3" CONDUIT FOR SOURCE/INCOMING SERVICE
CONDUCTORS. METER BASE SHALL BE EFFECTIVELY GROUNDING.

GROUNDS- #4 SOLID COPPER CONDUCTOR AND TWO (2) 8' GROUNDING
RODS, SIX (6) FEET APART. (CHECK LOCAL CODES).

SERVICE PANEL- SUITABLE DISCONNECTING AND/OR BREAKER EQUIPMENT
AS REQUIRED. ALL-IN-ONE OR COMBINATION SERVICE EQUIPMENT MEETING
THESE SPECIFICATIONS ARE ACCEPTABLE.

PEDESTAL- SOUNDLY CONSTRUCTED OF PRESSURE TREATED LUMBER/POST
OR EQUIVALENT.

CONDUITS- ONLY GRAY, ELECTRICAL, PVC, SCHEDULE 40 OR GREATER.
(CHECK LOCAL CODES).

(CONDUITS FOR SUPPLY CONDUCTORS, SOURCE TO METER, WILL BE 3",
UNLESS OTHERWISE SPECIFIED BY DREMC, WITH NO REDUCING COUPLINGS,
OFFSETS OR MORE THAN TWO (2) 90 DEGREE SWEEPS).

ELECTRIC SERVICE EQUIPMENT SHALL BE PLACED IN A LOCATION
AGREEABLE TO DREMC.

DREMC WILL FURNISH/INSTALL SERVICE SUPPLY CONDUCTORS AND METER.
SPECIFICATIONS ON THIS PAGE REPRESENT DREMC MINIMUM STANDARDS.
LOCAL CODES MAY CALL FOR ADDITIONAL OR MORE STRINGENT
REQUIREMENTS. THE OWNER/ELECTRICIAN MUST ENSURE COMPLIANCE WITH
ALL APPLICABLE CODES GOVERNING ELECTRICAL SERVICE.

TABLE A

ELBOW DESCRIPTION	RADIUS
1" - 90°	18"
2" - 90°	36"
3" - 90°	36"
4" - 90°	36"
6" - 90°	48"

OKEFENOKE RURAL ELECTRIC MEMBERSHIP CORPORATION
NAHUNTA, GEORGIA

CONSTRUCTION STANDARDS			
320/400 AMP SERVICE PEDESTAL INSTALLATION			
DWN.	BB	DATE: 10/05/2023	DWG. NO.
CKD.	MBM/WSD	APPD. WSD	
SCALE: N.T.S.		584-6233	
DATE	REVISION	DATE	REVISION
05/05/23	BB		
			B-27
			© 04/05